



310 Walnut Street, Milton, DE  
[miltonartguild310@gmail.com](mailto:miltonartguild310@gmail.com) 302.684.1500  
[www.miltonartsguild.org](http://www.miltonartsguild.org)

## All Eyes on Photography!

*“Wow, Moody, Happy, Oh I Love This, Beautiful,  
Makes me Happy, Look at Those Colors,  
Wonder How He Got That?!?”!*

These were just a few of the comments overheard during the Opening Reception for the Photography Exhibit. Thanks to the 32 Members sharing their wonderful work! We had a great turnout. If you couldn't attend the opening, make it a point to see this show!



## 2017 CALENDAR DATES OF INTEREST

*Saturday, Sept. 30*

Special Marbling Workshop  
9:30-12 at MAG

\$40 members, \$45 nonmembers

*Wednesday, Oct. 18*

MAG Artful Touch

Mixed Media w/ Kathy Fessenbecker

6:30 - 8:30pm

Members PrePay for \$10 savings

*Tuesday, Oct. 31*

Receiving “Reflections” & Pickup

Photography - 10am - 2pm

*Friday, Nov 3*

Opening Reception – “Reflections”

5 -7pm

Thanks to Happy Cow for sponsoring the refreshments at the Photography reception!



## How do you make an exhibition great? Great food, attention to detail, and Iris with the clicker!



## Lost your Marbles? We found them! It's a surprise mini workshop with Elaine Ippolito.



We all know “oil and water” don’t mix, but combining acrylic paints and liquid starch can create beautiful marbled designs. There are some tricks!

Elaine Ippolito reveals the secrets.

In this mini-workshop, create marbled effects on “canvas shoes” so make sure you bring some. If shoes aren’t your preference, we’ll provide paper novelties - gift bags, bookmarks, scrapbook papers – to allow you to use your imagination to create! Got a different idea, bring the supply to try it. Join in the fun while learning a new technique.

Saturday, Sept. 30 from 9:30-12:00 at MAG.

Cost: \$40 for members and \$45 for non/members.

Space for 15 participants.

Contact Lynda Gannon - [lyndaraeg@gmail.com](mailto:lyndaraeg@gmail.com), 302.632.7868

# September Membership Meeting

VP Sue Dutton led the meeting as Pres. Anne Buck was out of town. Members learned of plans for 2018 for exhibitions, workshops, and special events. Holly Days Check lists were distributed. Rita Poore gave a framing demo for 8x8 paintings in floater frames. Turn out was good, but we'd love to see more members be involved in these meetings



WELCOME NEW MEMBERS!

DIANN CORSNITZ, RAY BOJARSKI, SIOBHAN DUGGAN, BRENDA PULVER, LESLIE LESKO, JOAN HUTCHINSON, CARRE CULVER, BODEN SANDSTRON, & ROSE HOKE

(Note some members are newer than others!)

## WE ARE NOW 100 MEMBERS STRONG!

We are very happy to announce we've hit the century mark in membership.

It was a goal, hopeful, but not out of reach, and we did it!

New member, Rose Hoke, put us over the top!

As we approach 2018, we have many exciting programs and opportunities in store for members. Many are in development. Siobhan Duggan and Barbara Buford are developing programs for children. (If you have ideas, or want to participate, please contact these ladies or a board member) Lynda Rae Gannon is developing Workshops and trying to put together a Bus Trip to a Museum and Jerry's Artarama in Wilmington. Sue Dutton has compiled a Procedures Manual for volunteers and Board Members. We are having new cabinets in the gallery and "point of interest" signs on the streets.

A group is only as strong as its members, and we have amazingly strong painters, potters, jewelers, photographers, fabric artists, and most importantly, volunteers. Thank you all so much!

## 2018 Exhibition Calendar

As announced at the September Membership meeting, the themes and dates for the 2018 gallery exhibitions have been determined. Members grab your brushes, cameras, clay, carving equipment, well anything you use to create and CREATE!

Jan. 9 – Feb. 27 – <i>Make Me Smile</i>	July 13 – July 27 – <i>8x8 Anonymous</i>
March 4 – March 27 – <i>CHS Student Show</i>	Aug. 3 – Sept. 4 – <i>Fur, Fins, &amp; Feathers</i>
March 30 – May 1 – <i>Garden Gifts*</i>	Sept. 4 – Oct. 23 – <i>Family of Man</i>
May 4 – June 5 – <i>Silver Linings</i>	Oct. 26 – Dec. 4 – <i>Dusk to Dawn*</i>
June 8 to July 10 – <i>Summertime Minis</i>	Dec. 8 – Jan. 1 – <i>Holly Days</i>

\*Denotes Judged Show

### MAG Bites

#### Reflecting on Reflections

Our next exhibition is themed "Reflections". This theme opens two roads to travel. One - reflection of emotion, experience, or thought. Another - actual highlights and distortion on either curved glassy surfaces or on flat reflective surfaces.

It can be a difficult choice, but one road or the other will speak to you. Just listen and create.

Look to your heart for inspiration and truly examine what you see in shiny surfaces...then let your talents run free.

### FYI...

We have some great local resources for Photographers and anyone who wants a quality image printed on archival papers. The Coastal Camera Club operates a print shop at the Rehoboth Art Guild. If you are a member of either, you may bring in your images on a thumb drive and work with "Lightbox" masters to produce amazing prints. Many at the current MAG show were printed there. For more info, touch base with members Paul Hammelsfahr or Ray Bojarski.

We also learned at the photography show intake, Walgreens can print your image on canvas. Dennis Coffin told us they printed and framed his pieces in floater frames for about \$50. That's a deal you might want to check out!

## MAG Board of Directors

President – Anne Buck      Vice President – Sue Dutton

Treasurer – Sue Marano      Secretary – Donna Sheppard

Hospitality – Liz Miceli      Communications – Rita Poore      Membership – Carol Yost

Workshops – Lynda Rae Gannon      Exhibitions – Sally Reed

Education/Artful Touch – Ginny Barney and Kathy Fessenbecker

*Please check the website for board member contact information*

*[www.miltonartsguild.org](http://www.miltonartsguild.org)*



***THE COUNTDOWN IS ON!  
HOLLY DAYS IS ONLY 2 MONTHS AWAY!***

Planning to reserve a table to sell fine art and/or crafts during the opening reception? It's time to review your inventory, and/or start creating now! Remember, each item needs to be individually priced and tagged with artist's name, plus please make a master list of what you are bringing to sell so sales inventory can match.

- Donna Sheppard will contact members about sale table reservations.
- Liz Miceli and Lynda Gannon will coordinate the "awesome spread" MAG is known for at this event. They will contact members for food donations.
- Sally Reed will be your point person for the exhibition. Receiving for the Holly Days Show (also pickup for Reflections show) will be Tuesday, December 5 from 10am-2pm.
  - Anne Buck will put the gallery in a holiday mood by decorating, she'll be asking for volunteer elves to help her.
- Rita Poore asks for any image of a piece you are planning to enter to be sent to her ASAP to be able to include it in promotion of Holly Days.
  - Sue Dutton will be asking for volunteers to clean up after the show.

This is truly a Guild effort, all are encouraged to help and participate!

## 2017 MAG Artful Touch Schedule

Upcoming Schedule is subject to change.

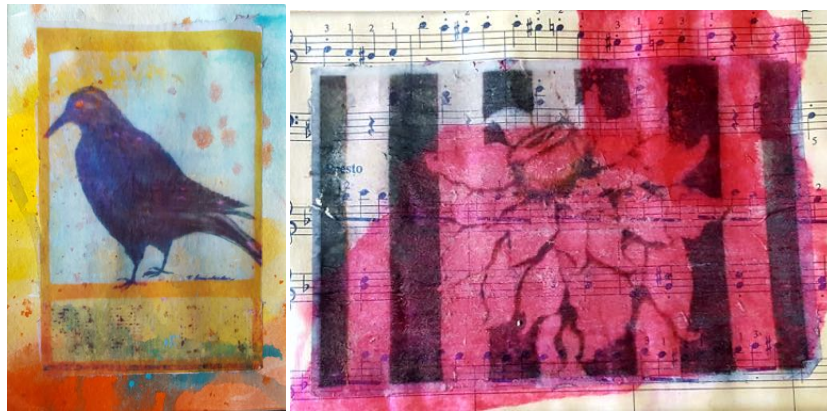
October – Acrylic and Mixed Media Painting with Kathy Fessenbecker

November – Small Paintings as Christmas Ornaments with Anne Buck

Classes are \$30 for members if you prepay. For Non-members or Members who have not prepaid, the cost is \$40. Classes run approximately 2 hours. Register & Pay online at [www.miltonartsguild.org](http://www.miltonartsguild.org) or with Ginny Barney at 302.236.8225 or [gabbybarney2013@gmail.com](mailto:gabbybarney2013@gmail.com) or Kathy Fessenbecker at 727.421.9530 or [kfess14@gmail.com](mailto:kfess14@gmail.com).

New techniques & topics in a “no pressure” environment with helpful teachers make our Artful Touches a great way to try something new. Get to know your fellow MAG members and future members in a welcoming atmosphere while learning together.

### OCTOBER’S ARTFUL TOUCH



#### Mixed Media with Kathy Fessenbecker

Wednesday, October 18 6:30 – 8:30pm

Kathy has been a practicing artist for over 30 years, experienced in many media including watercolor, porcelain painting, oil, color pencil, acrylic, collage and mixed media. Her art education has been through private classes and workshops. She teaches private classes and painting parties.

Kathy and her husband are originally from Chester County, PA and spent 30 years in the Tampa Bay area of Florida before recently moving to the Lewes area. She was very active in the Florida art community where she was a member and officer of several art guilds and an original member of Art Trysts Studio.

“There are always new materials and methods for artists to use to express themselves. The creative urge continues to push, keeping me creating and stretching. Currently I love working with mixed media, creating a work with that is a blend of realism and abstract, often inspired by nature,” says Kathy.

Kathy is currently a member of Milton Arts Guild and Rehoboth Beach Art League.

## MEMBER NEWS

The Milton Garden Club is hosting a “plein air- painting in the garden” event during their annual tour on Sunday, October 1. Here ‘s where you can find our members painting away in great outdoors. Sue Dutton, Anne Buck, Edilu Nerhbas will be at the Pepper Garden (508 Federal St), Libby Zando will be at Marsden Garden (107 Arch Street in Heritage Creek), Siobhan Duggan and Geri Gaskell will be at Winterbottom Garden (14354 Sand Hill Road), Patricia Truitt will be at the Esham Garden (207 Federal St), and Cathy Serwalt will be at the Kemp Garden (119 Heritage Blvd, Heritage Creek). Can’t wait to see what they find to paint! Look for them when you take the tour.

Please send any Member News to Rita Poore ([rpoore40@aol.com](mailto:rpoore40@aol.com)). We want to know about your upcoming shows, awards, and accomplishments! Please share!



Geri Gaskill’s Watercolor Artful Touch  
Produced Beautiful Results! Thanks Geri!  
Congrats To All, Lovely Work!

### Artful Touch Schedule for 2018

(Please remember dates/classes are subject to change)

January 16	Intro to Pastels w/Siobhan Duggan	June 19	Watercolor on Mineral Paper w/Jan Henning
February 20	Lightroom w/ Ray Bojarski	July 17	Iris Paper Folding w/Sandee Duncan
March 20	Watercolor on Yupo w/Rita Poore	August 21	Photo Transfer on Wood w/Deny Howeth
April 17	Alcohol Inks w/Barbara Buford	Sept 18	Surprises w/Liz Micelli
May 15	Jewelry w/Edilu Nehrbas	Octr 16	Mounting Art on Wood Blocks w/Sally Reed

## 2018 Membership Note

We'll be starting our Membership Drive soon. If you know someone who would like to join, please let them know if they join in October, November, or December, they will be counted in the membership for 2018, basically getting a 15 month membership for the cost of a 12 month membership. This is a "one time only" for new members only.



## We have Great MAG SWAG!

It's never too early to think of Christmas Presents for the Artist! Aprons, hats, shirts, & tote bags are all available.

Contact Donna Sheppard to purchase any item!

These are only available at the gallery, so you'll have to swing on by. Plus you can pick up cards, small works, pottery, jewelry, and matted original art and prints.

## Reflections on Water

Key West Artist Sean Callahan starts on the reflections in water.



This surprise watercolor one-day workshop, presented by award-winning watercolor artist, Sean Callahan was a special experience. He was in town (thanks to Hurricane Irma) and gave participants a primer on reflections in water. All eleven ladies had a great time and produced some great paintings, as you can see! "Hopefully this helps with MAG's next show "Reflections," said Sean, "remember value changes creating the illusion of movement are key."



# Exhibitions for 2017

October/November - Reflections

December – Holly Days 2017

Please note: MAG uses a prospectus, specific to each exhibit for entries into exhibitions, available on the website. Framing restrictions, important dates, tagging information, entry form, and other important details are covered in this document. Reminders of drop off & pick up dates are on Facebook, website, and an email blast.

## *MAG Website GALLERY PAGE*

Many societies and guilds charge to have member artwork and bios included on their websites, but MAG is FREE. We still have a long list of members without a bio and examples of artwork. If you are not listed on the Gallery page, send your bio & a .jpeg of your artwork to me. Our Website page shows the caliber of our members, promotes you as an artist, and could result in sales for you. Please write your bio, attach .JPEGs of your artwork, and send them to any board member. Need help? Contact a board member. We want EVERY member listed and promoted, but it all starts with you.

Please make a point to visit [www.miltonartsguild.org](http://www.miltonartsguild.org) to get started.

We have two (2) Facebook pages - a public page and a member's page. For the member page you must request inclusion. Information may vary on these pages, so please check both when surfing the net. Please "like" us on both...more Likes more Views! Plus feel free to "share" with your friends!



Register with Delaware Division of the Arts to join their Artist's Roster. Go to the Website, find the heading "artist" on the upper right corner of the Delaware Artist Roster home page, and click on "Register" to create an application for a new listing or "Log In" to edit an existing listing.



MAG is supported in part, by a grant from the Delaware Division of the Arts, a state partnership with the National Endowment for the Arts.

The Division promotes Delaware Art events on

[www.DelawareScene.com](http://www.DelawareScene.com)